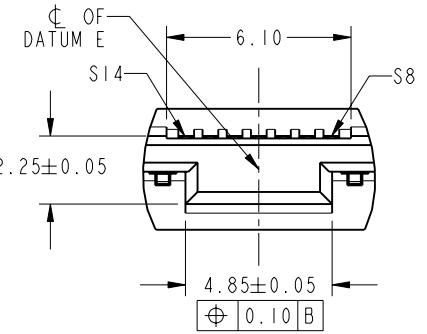
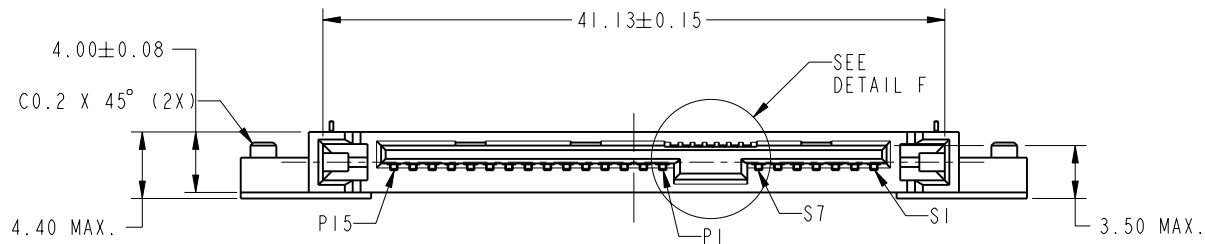


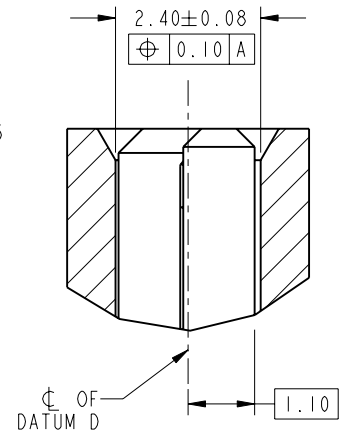
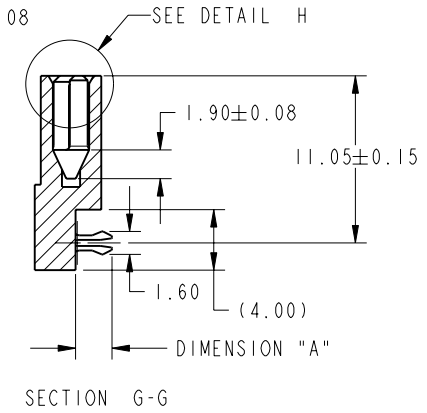
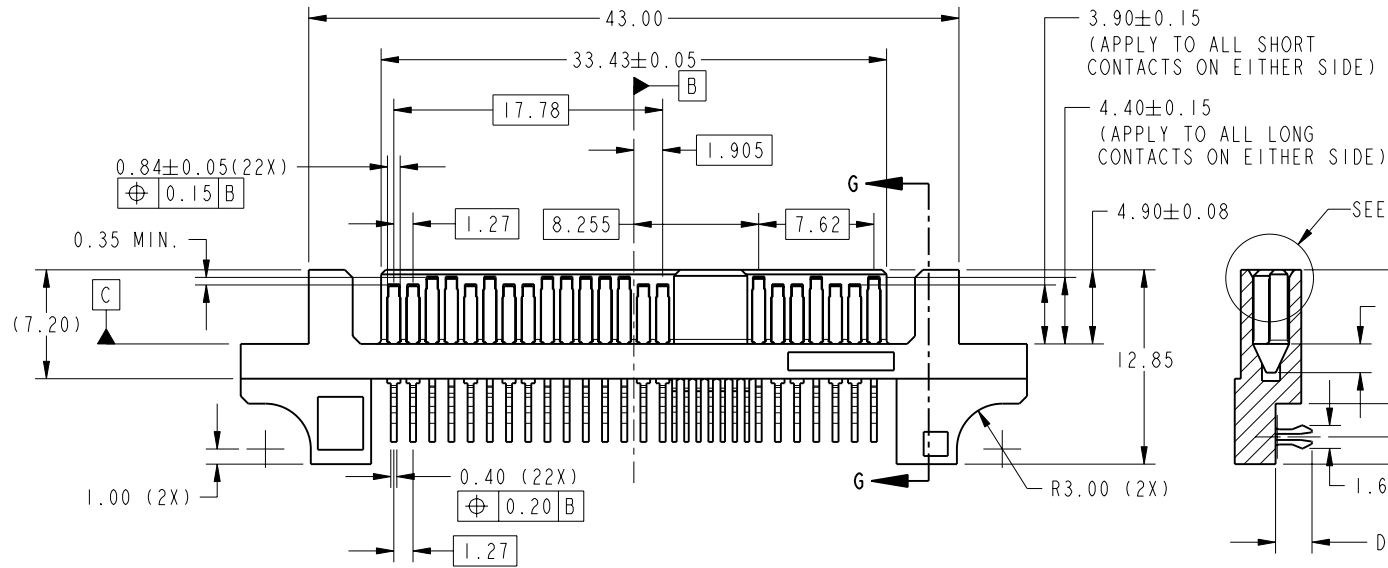
PRODUCT NO.
10034524-001LF
10034524-002LF

A



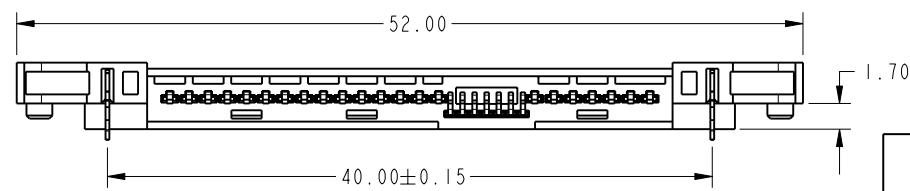
DETAIL F
SCALE 4:1

B



DETAIL H
SCALE 8:1

C



D

rev	ecn no	dr	date
H	S08-0294	HKL	2008-09-10
-	-	-	-
C	S05-0170	SHT	2005-06-09
D	S05-0220	SHT	2005-07-29
E	S06-0100	HKL	2006-05-05
F	S07-0353	HKL	2007-10-10
G	S08-0221	HKL	2008-07-07

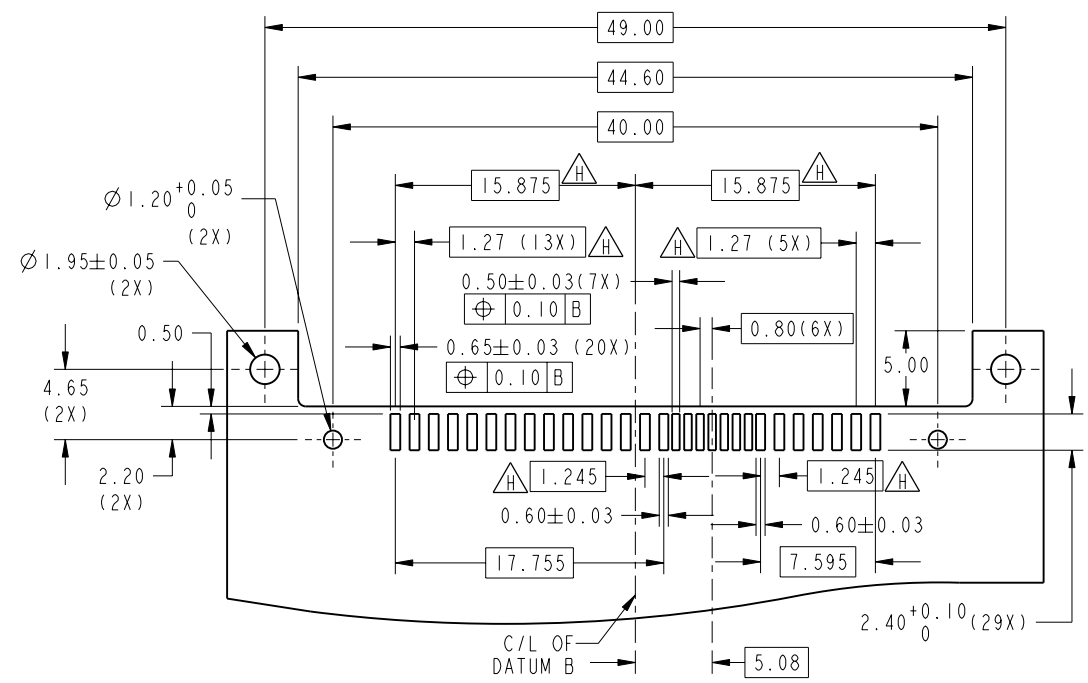
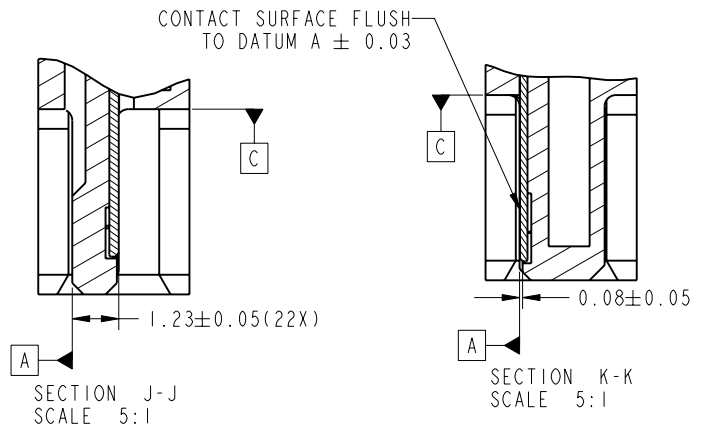
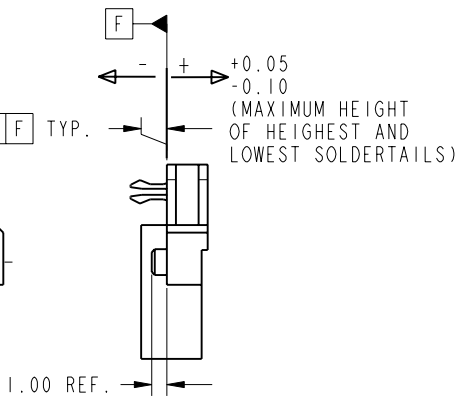
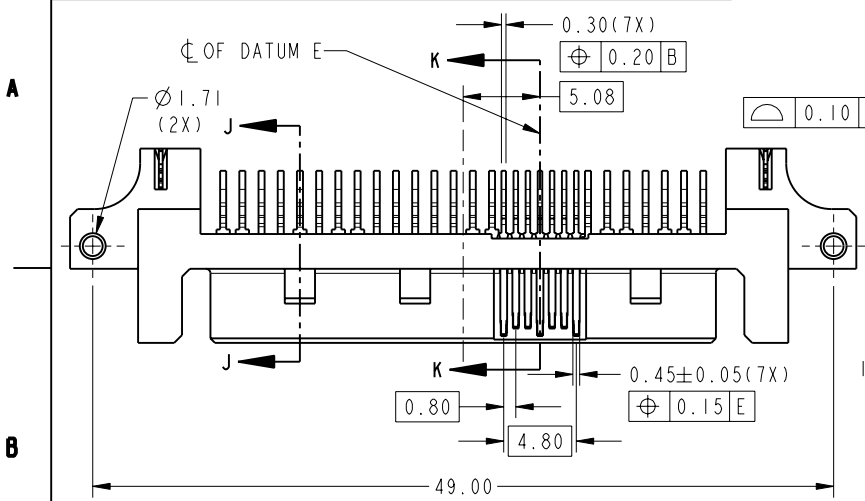
www.fciconnect.com		surface	tolerance std	projection	MM
		✓	ASME Y14.5	⊕	←→
		TOLERANCES UNLESS OTHERWISE SPECIFIED		size	Scale
Dr	SH TAN	2004-08-19	ANGULAR	A4	2:1
Eng	HK LIM	2008-09-10	LINEAR	ECN	S08-0294
Chr	HK LIM	2008-09-10	0° ±2°	Spec ref	
Appr	JOEY NG	2008-09-10	Product family		
FCI		SAS PLUG R/A		dwg no	10034524
		TYPE ASSY		CUSTOMER	Rev. H
		catalog no		sheet 1 of 2	



Copyright FCI.

REV E - 2006-03-28

PRODUCT NO.	PCB THICKNESS	DIMENSION "A"
10034524-001LF	1.60	2.40±0.15
10034524-002LF	1.20	2.00±0.15



SCALE 2:1

RECOMMENDED SMT PAD DIMENSIONS

- NOTES:
- MATERIAL:
HOUSING: HIGH TEMPERATURE PLASTIC, BLACK, UL94V-0
CONTACT & HOLD DOWN: COPPER ALLOY
 - FINISH:
CONTACT: 1.27um Min. NICKEL UNDERPLATE OVERALL,
1.91um Min. 100% MATTE TIN(LEAD-FREE) ON SOLDER TAIL,
0.76um Min. GOLD ON CONTACT AREA
HOLD DOWN: 1.91um Min. 100% MATTE TIN(LEAD-FREE) OVER
1.27um Min. NICKEL UNDERPLATE OVERALL
 - RECOMMENDED PCB THICKNESS: 1.20 & 1.60mm
 - THIS PRODUCT MEETS EUROPEAN UNION DIRECTIVES AND OTHER
COUNTRY REGULATIONS AS DESCRIBED IN GS-22-008
 - THE HOUSING WILL WITHSTAND EXPOSURE TO 260°C PEAK
TEMPERATURE FOR 10 SECONDS IN A CONVECTION, INFRA-RED
OR VAPOR PHASE REFLOW OVEN
 - A SYMBOL Δ WILL BE NEXT TO ANY DIMENSION, VIEW OR NOTE WHICH
HAS BEEN MODIFIED WITH THE CURRENT DRAWING REVISION

REV E - 2006-03-28

FCI	TITLE	SAS PLUG R/A	dwg no	10034524	Rev.	H
		TYPE ASSY	CUSTOMER	sheet 2 of 2		
	CATALOG NO					